

Anglo  Aluminum

World Class Bauxite Deposits

TSX-V ALU

www.angloaluminum.com



World Class
Bauxite Projects
Guinea, West Africa

CORPORATE PROFILE

Anglo Aluminum Corp. is a Canadian-based, TSX-Venture Exchange listed (symbol ALU) mineral exploration company engaged in the evaluation and development of its bauxite concessions in Guinea, West Africa.

Management

Strong, dedicated management team with diverse experience.

Experienced exploration team in Guinea.

Good understanding of the socio-political and economic landscape.

Properties: 2336 km²

536 km² consisting of one exploration permit covering two titles situated in the Boke Bauxite Belt of north west Guinea.

1,800 km² consisting of one exploration permit situated in the Mamou-Dalaba Area of southern Guinea.

Permits are directly surrounded by several of the world's major bauxite miners.

High Quality Bauxite Deposits

The Boke Bauxite Belt hosts the world's largest and highest quality bauxite deposits with grades of 40% to 60% aluminium oxide.

Republic of Guinea

Possesses incredible mineral potential.

Remains under-explored and underdeveloped.

Business Climate

Excellent working relationships in a rapidly improving political environment.



SHARE STRUCTURE

Share Structure	As of August 25, 2010
Issued & Outstanding:	81,705,285
Options:	4,919,000
Warrants:	NIL
Fully Diluted:	86,624,285

MANAGEMENT AND DIRECTORS

JAMES T. GILLIS, President, Chief Executive Officer and Director	Mr. Gillis has a background in railroad systems and project management, which led him into various roles with a variety of Canadian companies. He has been the President of James T. Gillis Management Co. Inc. since 1985, a private company which provides management services to public companies. Mr. Gillis has significant experience in the mining exploration and development sector, with over 25 years experience in all levels of corporate development, financing and project management. He is a founding Director, President and CEO of Anglo Aluminum Corp., and Cassidy Gold Corp. He has significant depth and experience in the strategic development of resource companies having held the positions of president, chief executive officer, chief financial officer, corporate secretary and founding director of a number of mining exploration companies over the years. For the past 9 years, Mr. Gillis has focused on numerous mineral exploration projects throughout sub-Saharan Africa, primarily Guinea, and including Niger, Kenya, Tanzania, and Liberia. He has worked in a wide spectrum of geological environments involving both base and precious metals.
CHRISTOPHER J. WILD, Director, VP Exploration, Chief Operating Officer	Mr. Wild has extensive experience in a variety of geological and mining roles. His early career focused early and advanced stage exploration for companies such as Noranda, Falconbridge, and Inmet Mining. He then served as chief mine geologist at both the open pit Mount Polley copper-gold mine and the underground Goldstream copper-zinc mine, in British Columbia, prior to opening his own geological consulting business. Over the past 8 years, he has managed a variety of exploration projects in West Africa, including the Kouroussa Gold Project in Guinea, the Manalo Gold Project in Mali, and gold and uranium projects in Niger. During that time, Mr. Wild has served at various times as Vice-President Exploration, President and CEO, and COO for Anglo Aluminum, as well as serving as VP Exploration for Cassidy Gold since 2003.
RUSSELL WILLIAMS, Director	Trained as a mechanical engineer at the University of Manchester, Mr. Williams spent 30 years with Alcoa Inc., a producer of primary aluminum, fabricated aluminum and alumina, working in a wide range of roles from engineering to maintenance and human resources. In his final three years with Alcoa, Mr. Williams was based in Pittsburgh and was President of Boke Service, the managing company of Company Bauxite de Guinee (CBG), which is the Alcoa JV in Guinea, and in that role was responsible for all activity at the operations in Guinea. Prior thereto, Mr. Williams was involved in all aspects of bauxite production for the company ranging from exploration through to project development and operations. He managed the West Australian bauxite mining operations, then had oversight of all of Alcoa's global mining activity in Brasil, Jamaica and Suriname, and during this period was responsible for the initial development of the Juruti bauxite mine in Brasil which was recently commissioned.

MANAGEMENT AND DIRECTORS

<p>AGUIBOU BAH, M.Sc. (ECON.) Operations Manager, Conakry</p>	<p>Mr. Bah has been in business for over 30 years in Guinea and other West African countries. He was the Administrator for the International Livestock Center of Africa in Bamako/Mali, the Operations Manager for Liberia Maritime Corp. in Libmar, the Marketing Director for Sealand Air in Liberia, the Commercial Director for Abu & Company Ltd./Guinness in Guinea and is currently the Operations Manager for Cassidy Gold Corp. in Guinea. He brings essential local knowledge and language skills (speaking five local languages and Bambara, French and English) to our project team.</p>
<p>ANDRIYKO HERCHAK, C.A., Director</p>	<p>Mr. Herchak is the CFO of Hathor Exploration Limited, an exploration company with a major uranium discovery in the Athabasca Basin. Prior to joining Hathor, Mr. Herchak held several senior financial positions with publicly traded entities, including 6 years at Intrawest Corporation and with FACS Records Income Trust. Mr. Herchak is a Chartered Accountant who also worked with the international accounting firm of Deloitte & Touche and holds a Bachelor of Commerce degree from UBC. Mr. Herchak brings solid experience in finance and business matters, public reporting and corporate governance.</p>
<p>DEBBIE M. SILVER, Corporate Secretary & CFO</p>	<p>Ms. Silver was a legal assistant from 1979–2002, involved in corporate, mining and securities law, and has been a public company administrator since 1997.</p>
<p>MARNI D. TUREK, B.Sc. Corporate Relations and Sustainability</p>	<p>Mrs. Turek has a B.Sc. in Environmental Chemistry and has 12+ yrs experience in environmental management. She has supervised large sustainability related projects and processes in both the government and nongovernment sectors, having worked for City of Kamloops Public Services and Operations Branch – Engineering Division, the Fraser Basin Council, and the BC Conservation Foundation. The common thread in all of the work Mrs. Turek has been involved in is bringing together multiple levels of government and community organizations to achieve successful implementation of initiatives, regulatory compliance and accountability to the public. She has worked on all fronts of environmental management including developing, implementing, monitoring and measuring programs (environmental management systems, drinking water quality, water conservation and energy management programs, environmental performance and indicators, climate change initiatives), developing and delivering education programs, facilitating and supervising research with universities (beneficial reuse of wastewater and biosolids, stormwater quality, watershed and wastewater research), running committees and workshops, coordinating large grant applications, and liaising with multiple levels of government and the community.</p>
<p>RICHARD KOSOLOFSKI, Director</p>	<p>Mr. Kosolofski is President of Mainline Roofing Co. Ltd., principal partner in Trine Investments, and owner/operator of commercial buildings throughout the central interior of British Columbia.</p>



ADVISORS

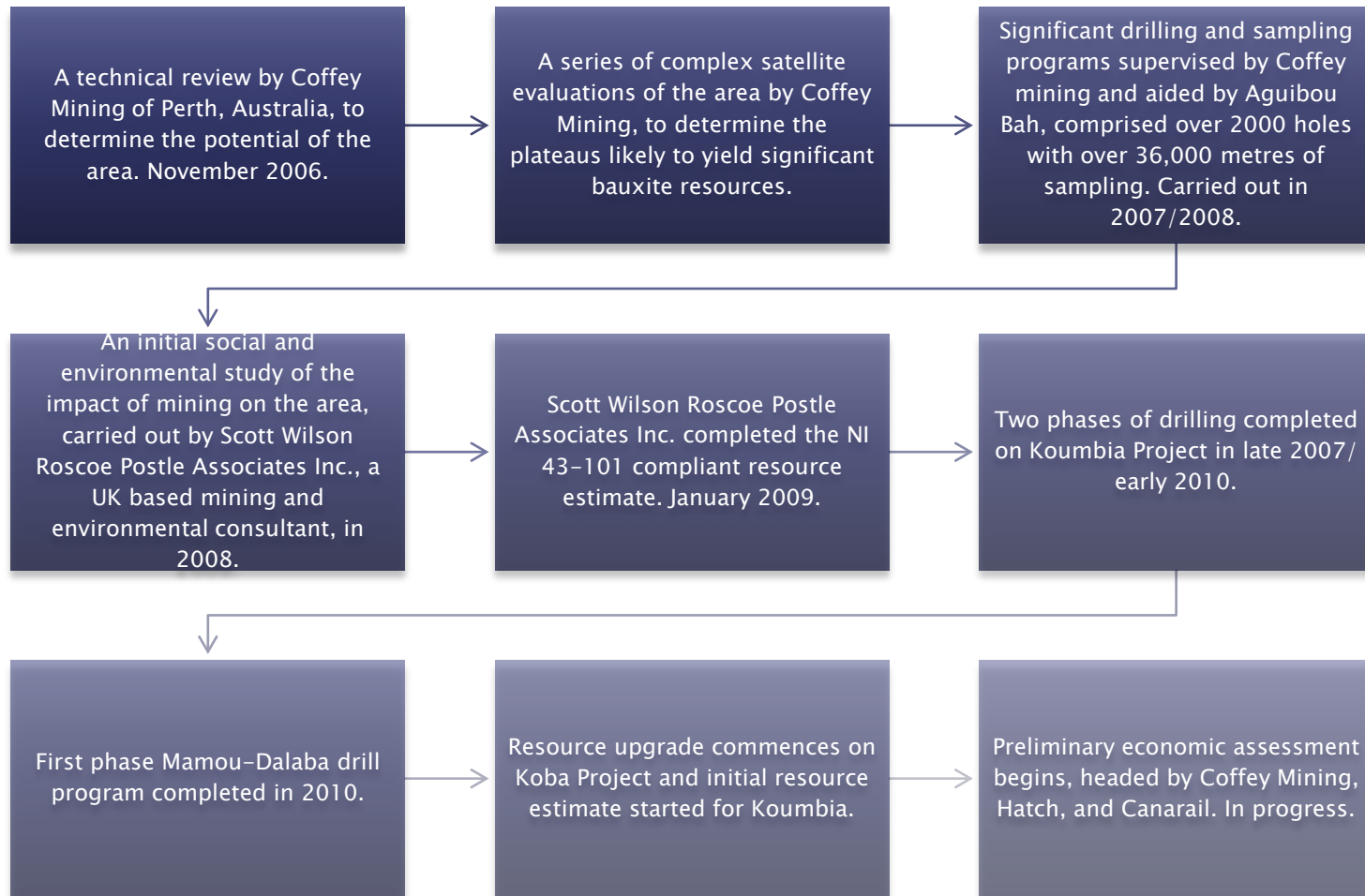
IVAN ANICH , Advisor	Mr. Anich, recently retired as a senior director for Hatch, was responsible for its global activities in the bauxite and alumina industries. Prior to this, Mr. Anich spent over 30 years with Alcoa in a wide range of senior managerial positions both in Australia and the United States with responsibilities for alumina refinery technical and operation areas.
MERVE THEDE , Advisor	Mr. Thede retired from Alcoa on Jan. 1, 2005 after 37 years of service in a wide variety of roles relating to trading in bauxite alumina and caustic soda. During the last 12 years he was President of Alcoa Steamship and Commercial Manager of Bauxite and Alumina. Since his retirement he has acted as consultant in the bauxite and alumina industry, acted as an expert in arbitration cases, and assisted several companies in the development of bauxite and alumina contracts. He has also provided advice to many international alumina companies and has helped several start up companies in the provision of their raw materials, and is considered a global expert in traded bauxite.



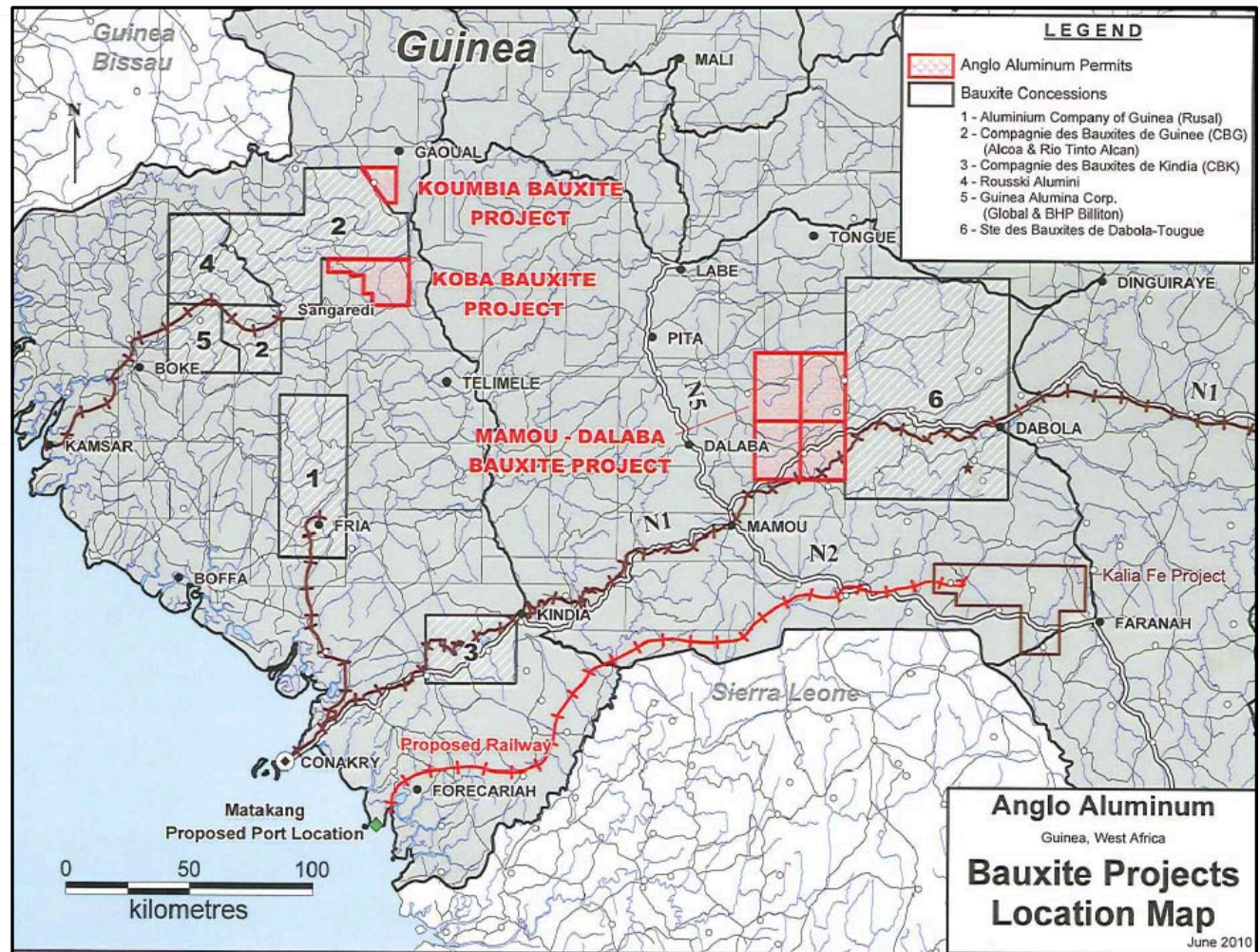
BAUXITE PROJECTS

Guinea, West Africa

BAUXITE PROJECT HIGHLIGHTS



BAUXITE PROJECTS LOCATION MAP



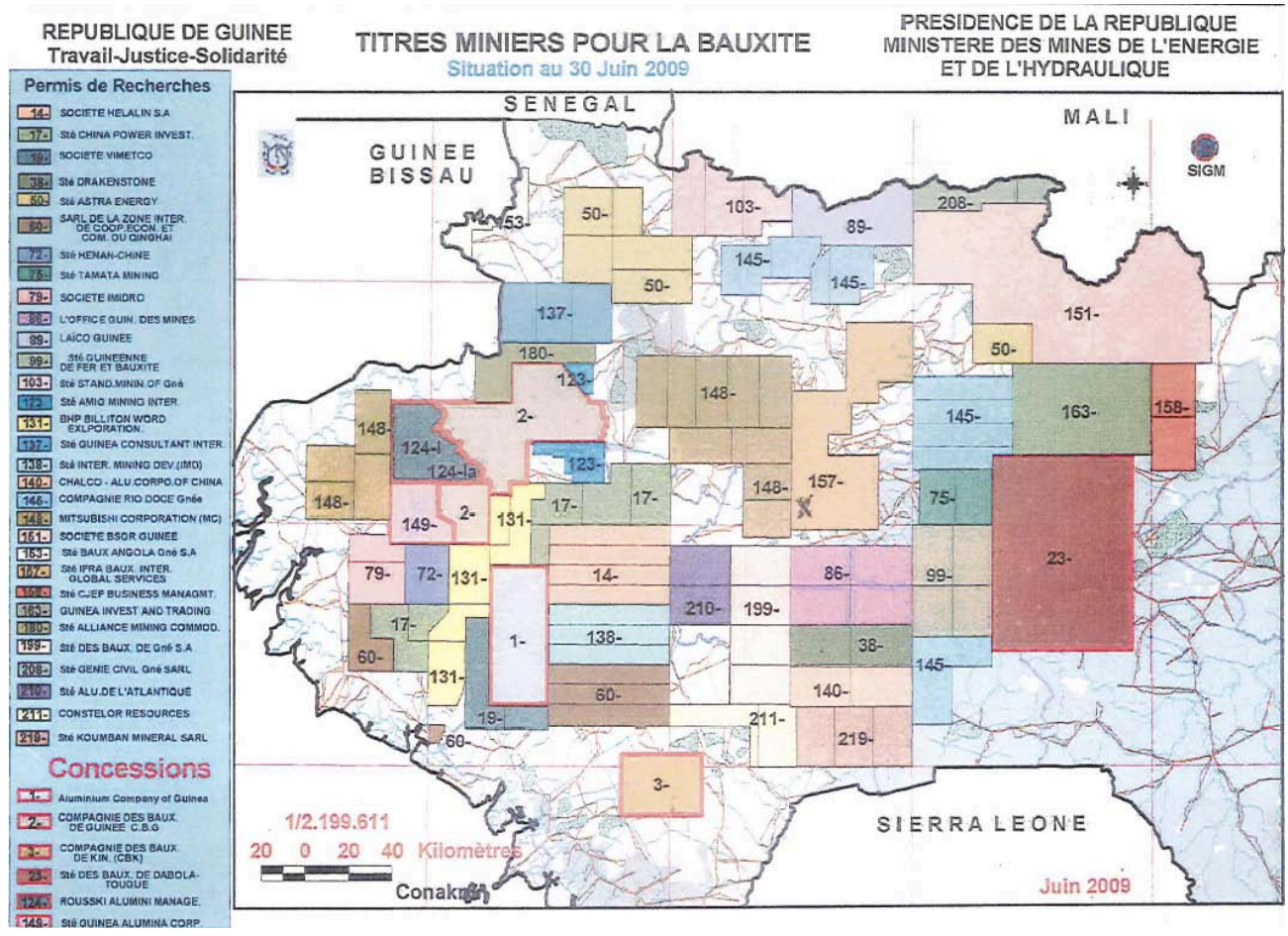
Why Bauxite?

- Bauxite is the “ore” of aluminum.
- Aluminum is one of the world’s most useful and used metals, possessing qualities of strength, flexibility, lightweight, corrosion resistance, formability, and high conductivity to both heat and electricity.
- Rapid growth of Asian economics has dramatically increased global demand for aluminum and hence, bauxite.
- In an environment of high demand and tight supply, the acquisition and development of bauxite resources presents a tremendous opportunity.

Why Guinea?

- Guinea is one of the largest bauxite producers in the world.
- Guinea hosts 30% of the global bauxite resources.
- Boke Bauxite Belt host the world’s largest and highest quality bauxite deposits with grades of 40 – 60% alumina.
- Anglo Aluminum has amassed a team of local and expatriate professionals experienced in bauxite exploration in Guinea.

BAUXITE LICENSES IN GUINEA



GEOLOGICAL SETTING & INFRASTRUCTURE

Geological Setting

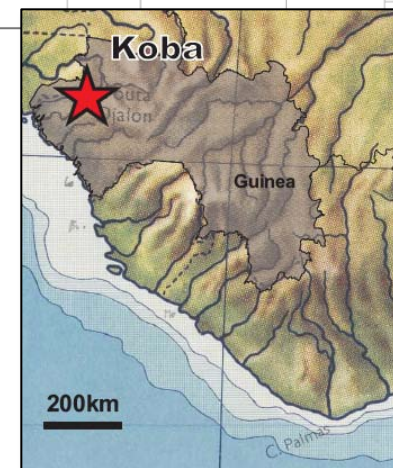
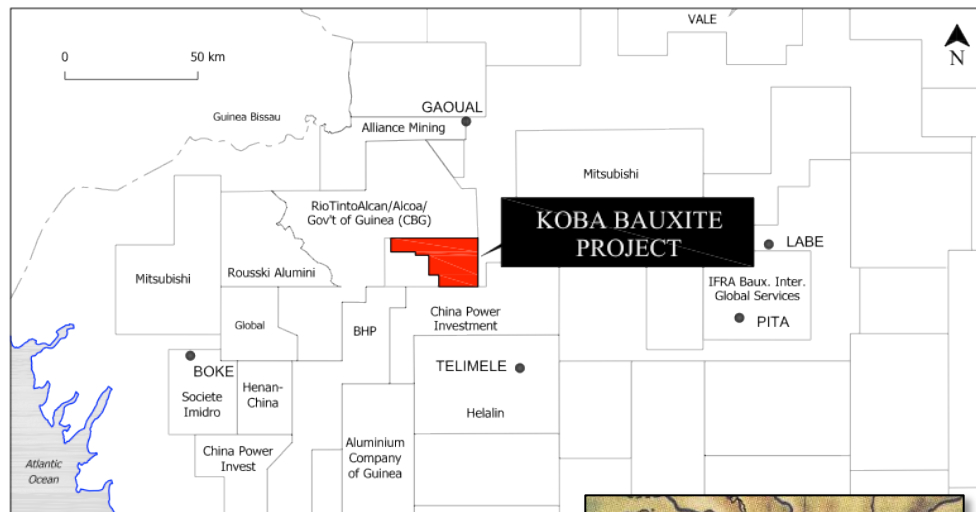
- Bauxite is derived from a flat-lying sequence of Paleozoic sedimentary strata and dolerite sills subjected to tropical weathering since the middle Miocene period, some 15 million years ago. These lithologies are highly aluminous, which when combined with the effects of tropical weathering and good drainage, result in high concentrations of alumina and iron oxides in the top layers of the weathered profile.
- Bauxite deposits of the Boke Bauxite Belt are rich in Gibbsite – $\text{Al}(\text{OH})_3$ and typically grade between 40–60% Al_2O_3 .
- The permits are underlain by gabbro and aluminous dolerite and sedimentary rocks. Residual bauxites have been confirmed on the southern Téliimélé permit. Bauxites have been confirmed in the northern Gaoual permit.
- A typical profile at Koba consists of 0–1 m of overburden, 4–10 m of hard bauxite (high Al_2O_3 and Fe_2O_3), 4 m of low grade transitional bauxite intercalated with clay, and 5 m of soft bauxite (high Al_2O_3 and kaolin).

Infrastructure

- Proposed and existing infrastructure includes refinery construction, hydroelectric development, and an existing railway line. This line is apparently commercially available and runs an additional 135 km to the port of Kamsar.
- Modern mining regulatory system.
- No interruptions to Bauxite operations in Guinea throughout its history.

KOBA PROJECT OVERVIEW

- Permits situated in the Boke Bauxite Belt in north western Guinea.
- 3 bauxite mines operate in the world class Boke Bauxite Belt.
- 536 km² land package in the prefectures of Telimele and Gaoual.
- Project management by Coffey Mining of Perth, Australia.
- Phase 1 drilling: 10,666 metres of drilling (aircore) in 558 holes completed.
- Phase 2 drilling: 26,093 metres of drilling in 1,589 holes completed.
- Scott Wilson Roscoe Postle Associates Inc. completed the NI 43-101 compliant resource estimate.
- Koba resource upgrade pending.
- Preliminary Economic Assessment in progress.



KOBA BAUXITE PROJECT

- A new NI 43-101 compliant resource estimate is planned for the Koba Bauxite Project.
- Since the initial resource estimate was completed in January 2009, over 6,000 additional samples from several plateaus, including Kouraidendeli, Sapi North and South, Tenkéré, Lakhorde, and Kounsitokhe, have been analyzed and added to the project database.
- Currently, Koba hosts NI 43-101 compliant Indicated Resources of 343,183,000 tonnes averaging 42.78% Al_2O_3 , 2.85% SiO_2 , and 27.83% Fe_2O_3 , and an additional 63,342,000 tonnes averaging 43.81% Al_2O_3 , 2.74% SiO_2 , and 26.76% Fe_2O_3 classified as Inferred Resources.
- A preliminary economic assessment (PEA) is currently being organized for both of Anglo's flagship projects at Koba and Koumbia, Guinea.
- That study will investigate the economics of establishing mining operations at Koba and Koumbia, both for direct-shipping of bauxite to offshore refineries and on-site refinery options.
- The PEA will utilize the initial resource estimate for Koumbia and the updated resource estimate for Koba.
- In 2007 and 2008, Anglo conducted property-wide drill testing of potentially bauxite-bearing plateaus on its Koba Bauxite Project, completing 2,147 drill holes totalling 36,759 metres in two phases of aircore drilling.
- Coffey managed the drill program on behalf of Anglo and West African Drilling Services ("WADS") provided drill services.
- All drill samples were submitted to SGS Mineral Services (Guinea) SARL for sample preparation and transferred to SGS Canada Inc. for assay analysis by XRF.
- The Koba Bauxite Project encompasses the 406 km² Telimélé exploration permit, also located in the prolific Boke Bauxite Belt. Koba lies 40 kilometres south of Koumbia.

OPPORTUNITY: NI 43-101 Resource

NI 43-101 Resource Estimate

INDICATED:

343,183,000 Tonnes

Averaging 42.78% Al₂O₃, 2.74% SiO₂

INFERRED:

63,342,000 Tonnes

Averaging 43.81% Al₂O₃, 2.74% SiO₂

Quality Control/ Quality Assurance

- Anglo Aluminum conducted a Quality Control/ Quality Assurance program that consisted of inserting 5 different bauxite reference samples at a frequency of one in every 20 samples.
- Duplicate field samples were also collected every 20 samples, processed and analyzed in the same manner as the original and statistically analyzed.
- In addition, SGS employs their own internal quality control procedures.

Indicated Bauxite Resources – Koba

343,183,000 Tonnes Averaging 42.78% Al₂O₃, 2.74% SiO₂

Plateau	Tonnage	Al ₂ O ₃ (%)	Fe ₂ O ₃ (%)	SiO ₂ (%)	TiO ₂ (%)	CaO (%)	MgO (%)
Eastern Plateaus							
Farenya	32,020,000	41.28	29.49	2.93	3.01	0.01	0.04
Madina Diang + Tito	100,836,000	41.65	29.53	2.69	2.57	0.01	0.04
Nomo	120,553,000	43.58	26.77	2.74	2.29	0.01	0.03
Ouda	43,411,000	43.73	26.86	2.84	2.20	0.01	0.02
Western Plateaus							
Foye	14,802,000	42.58	26.94	3.72	2.08	0.01	0.03
Kouraidendeli	31,561,000	43.62	26.52	3.33	2.07	0.02	0.03
TOTAL	343,183,000	42.78	27.83	2.85	2.40	0.01	0.03

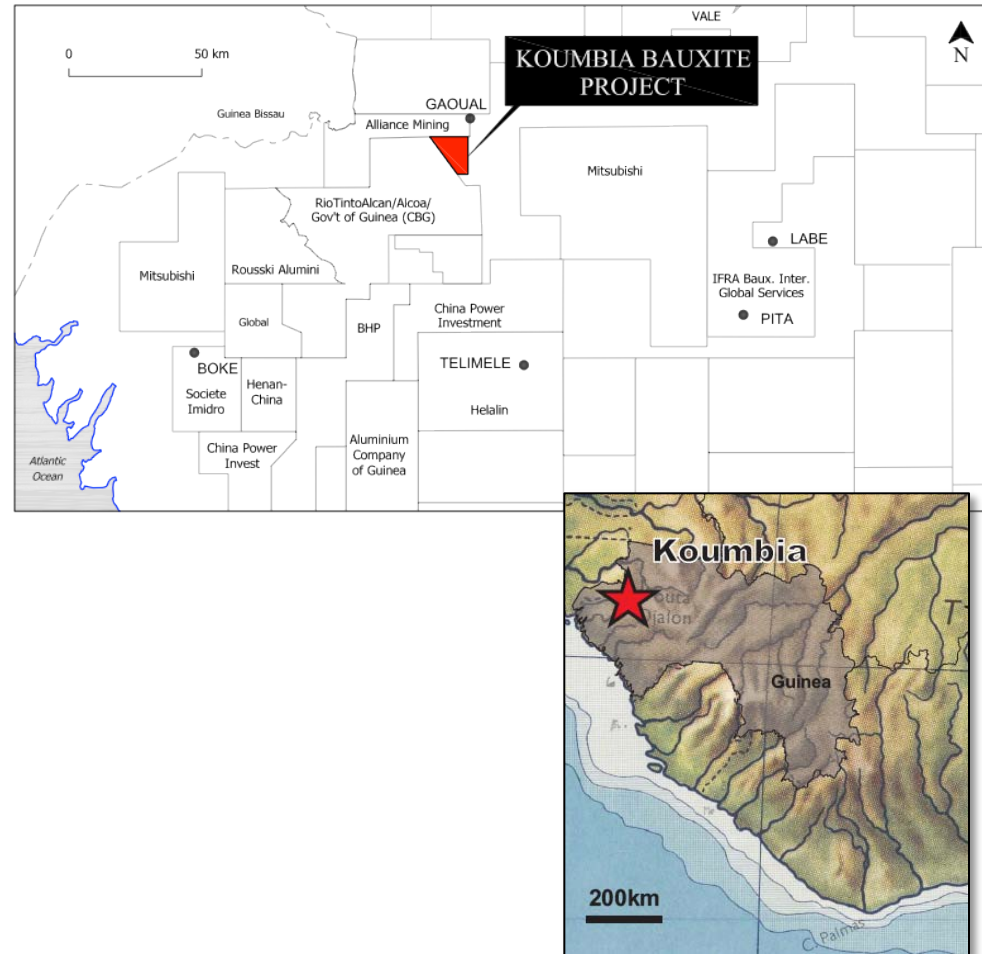
Inferred Bauxite Resources – Koba

63,342,000 Tonnes Averaging 43.81% Al₂O₃, 2.74% SiO₂

Plateau	Tonnage	Al ₂ O ₃ (%)	Fe ₂ O ₃ (%)	SiO ₂ (%)	TiO ₂ (%)	CaO (%)	MgO (%)
Western Plateaus							
Fakkerefonye	31,970,000	44.87	25.08	2.82	2.50	0.01	0.03
Killikocco	7,944,000	41.41	30.19	2.54	2.73	0.02	0.02
Ore Pousse 1	1,137,000	41.33	30.27	2.79	1.91	0.02	0.03
Ore Pousse 2	7,439,000	44.18	26.33	2.87	2.32	0.02	0.04
Touguiwel Competa	14,852,000	42.84	28.49	2.63	2.29	0.01	0.05
TOTAL	63,342,000	43.81	26.76	2.74	2.44	0.01	0.03

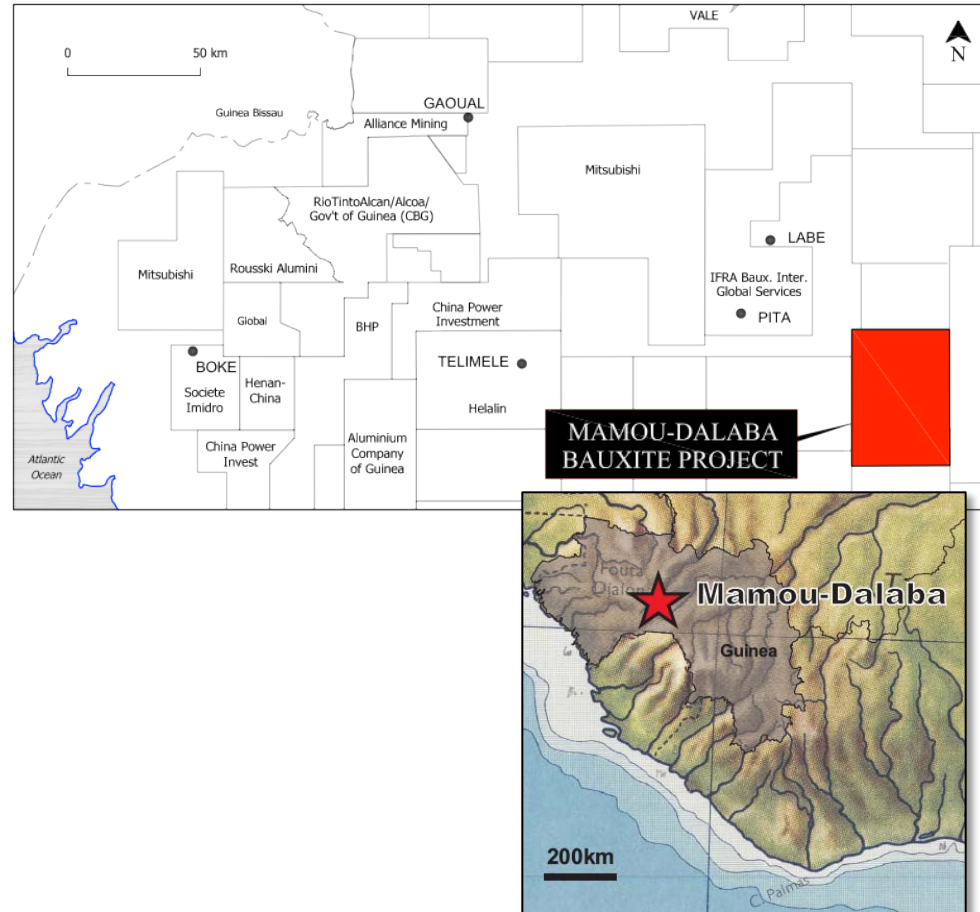
KOUMBIA BAUXITE PROJECT

- Resource definition drilling targeted the Kounsidi Plateau, where 57 initial aircore drill holes all intersected between 3 metres and 17 metres of bauxite, averaging 11.46 metres, at a hole spacing of 300 metres (see Anglo Aluminum Corp. News Release, February 18, 2010).
- Weighted average grades for the 57 holes are 50.01% Al_2O_3 , with relatively low silica (SiO_2) at 2.07% and iron (Fe_2O_3) at 17.01%.
- Recently completed drilling totalled 2869 metres in 190 holes, infilling existing aircore drilling at a hole spacing of 150 metres, in advance of a NI 43-101 compliant resource estimate.
- Four auger drill holes twinned previous aircore drill holes.
- Shallow pits will supply samples for bulk density sampling.



MAMOU-DALABA BAUXITE PROJECT

- The Mamou-Dalaba bauxite property comprises 4 exploration permits covering 1,832 km² in southwestern Guinea.
- Early in 2010, Anglo retained Coffey to complete a preliminary assessment of the project.
- First pass ASTER processing generated 150 targets with a combined surface area of approximately 181 km².
- Coffey was able to visit 30 of these targets on the site visit.
- Of these, 14 targets with a combined surface area of 55 km² were identified as having high-prospectivity for bauxite on the basis of field observations and unverified historical drill hole data referenced on the 1:200,000 Dalaba Geological Map Sheet.
- Based on the high-prospectivity of these plateaus, Anglo embarked on the recently completed drill program to quickly confirm these bauxite targets.
- Anglo acquired the Mamou-Dalaba project through an agreement to purchase 100% of the issued share capital of Société Guinéenne de Fer et de Bauxite (SGFB), a local Guinean company that holds the 4 Mamou-Dalaba bauxite permits.
- SGFB also holds 14 base metal and 4 iron ore permits in the Beyla and Kankan areas, and 3 uranium permits in the Beyla area in south-eastern Guinea.
- Coffey Mining has completed an initial assessment on the Kankan-Beyla permits where no additional work is contemplated at this time.



SOCIAL AND ENVIRONMENTAL ACCOUNTABILITY

Anglo Aluminum takes its social responsibility seriously.

We continue to identify and develop working relationships that maximize the economic and social benefits of responsible resource development.

Anglo Aluminum has met with community leaders in Telimele, Koba, Madina Diang, and other villages throughout the concession prior to beginning fieldwork. Consultations were also held with the Prefet of Telimele.

Anglo Aluminum is committed to conducting exploration and development in line with the highest international performance standards, as laid out by the World Bank Group (WBG) and the International Finance Corporation (IFC), compatible with the Equator Principals.



Aguibou Bah, Anglo Aluminum's Operations Manager in Guinea, meets community leaders in the village of Madina Diang.

CONTACT INFORMATION

Corporate Head Office

1100 – 235 First Avenue
Kamloops BC Canada V2C 3J4
Telephone: 250.374.7377
Fax: 250.828.2269

Website

angloaluminum.com

Email

jgillis@angloaluminum.com

